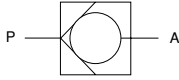


# CHECK VALVES

C1, C125, C250, C375, C500

## Symbol



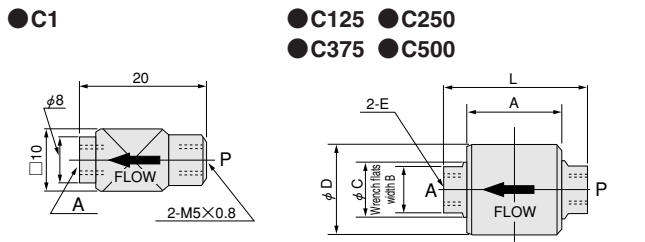
## Specifications

Item	Model	C1	C125	C250	C375	C500
Port size		M5×0.8	Rc1/8	Rc1/4	Rc3/8	Rc1/2
Effective area [Cv] mm <sup>2</sup>		2.5 [0.12]	6.0 [0.30]	14 [0.72]	74 [3.7]	
Media		Air				
Operating pressure range MPa {kgf/cm <sup>2</sup> } [psi.]		0.03~0.9 {0.3~9.2} [4~131]	0.07~0.9 {0.7~9.2} [10~131]			
Proof pressure MPa {kgf/cm <sup>2</sup> } [psi.]		1.35 {13.8} [196]				
Operating temperature range (atmosphere and media) °C [°F]		0~60 [32~140]				
Lubrication		Not required				
Mass g [oz.]		7 [0.25]	40 [1.41]	120 [4.23]	260 [9.17]	

## Order Code

Port size
1 : M5×0.8
125 : Rc1/8
250 : Rc1/4
375 : Rc3/8
500 : Rc1/2

## Dimensions (mm)

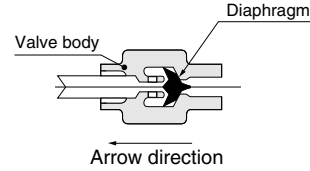


Model	E	L	A	B	C	D
C125	Rc1/8	43	27.5	14	15	26
C250	Rc1/4	62	40	24	26	38
C375	Rc3/8	85	49	32	34	50
C500	Rc1/2	85	49	32	34	50

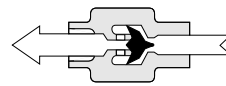
## Operating Principles, Major Parts and Materials

### C1

● Normal condition

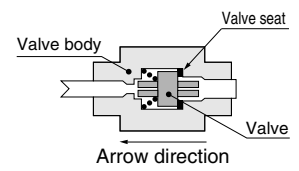


● Operating condition

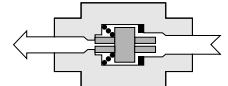


### C125, C250, C375, C500

● Normal condition

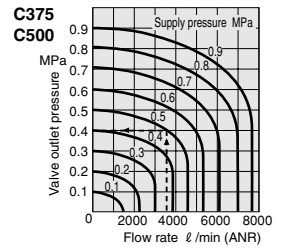
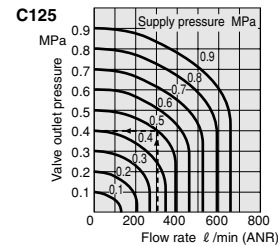
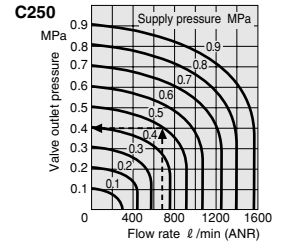
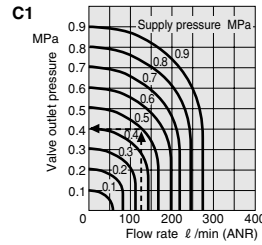


● Operating condition



Parts	Materials			
	Model	C1	C125 C250	C375 C500
Body		Brass	Aluminum alloy (anodized)	
Valve body		Synthetic rubber	Nylon	Aluminum alloy (anodized)
Valve seat		Brass	Synthetic rubber	

## Flow Rate



1MPa = 145psi., 1 l/min = 0.0353ft<sup>3</sup>/min.

### How to read the graph (C375, C500)

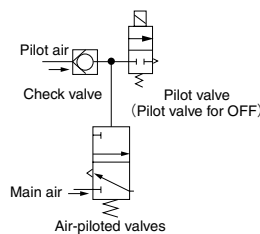
When the supply pressure is 0.5MPa [73psi.] and the flow rate is 3680 l/min [130ft<sup>3</sup>/min.] (ANR), the valve outlet pressure becomes 0.4MPa [58psi.].

## Handling Precautions

Without a pressure difference of 0.07MPa [10psi.] or more between P and A, leaks can occur. When holding pressure in air tanks, etc., reduce the pressure on the P side.

## Application Examples

To hold pilot pressure



To hold air pressure in the cylinder

