

<http://www.koganei.co.jp>

ISO9001
ISO14001



Creceed

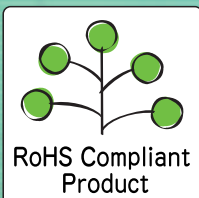
Cleanliness Monitor

CC Monitor

Environmentally friendly
RoHS Compliant Product



***New proposal for
contamination control
Constant monitor for cleanliness
check makes its debut!***



Creceed CC Monitor



Environmentally friendly **RoHS** compliant product!

The light scattering principle is used for high-precision and stable detection of floating particles at $0.3\ \mu\text{m}$ or larger.

Displays the cleanliness level in 10 stages on an LED (equivalent to ISO classes 5 to 8).

In response to contamination problems, multipoint and constant monitoring can ensure early detection of contamination sources.

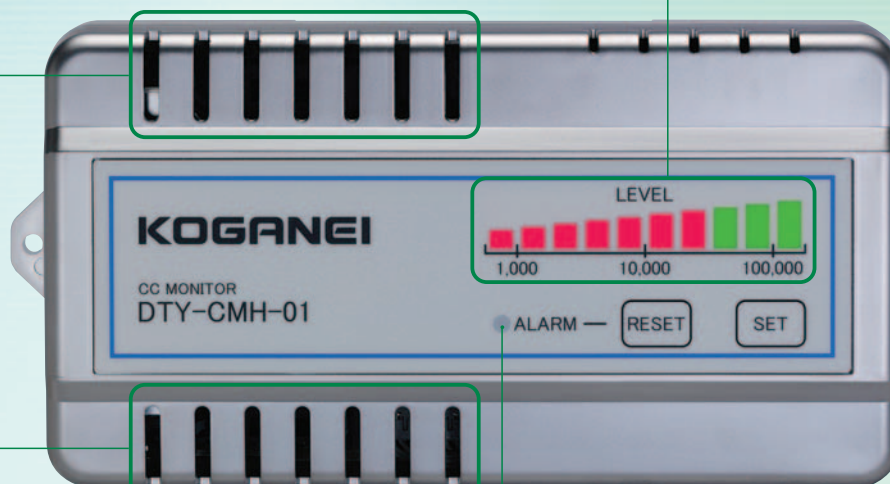
- Because the sampling method uses rising airflow from a built-in heater, there is no need for a suction pump or blower (quiet, energy-saving, and long-life).
- An alarm output can also be set at the desired cleanliness level. (The alarm output consists of three types: an LED indicator, a buzzer, and an open collector output.)
- Existing LANs with Ethernet capability can be used to monitor and collect detection data.

Ventilation inlet

Outside air enters through a ventilation inlet, and particles are detected by an internally installed sensor.

Level display

Red LED lights continuously display the current cleanliness level.



Front of the body

Mounting hole ①

Mountable from the front using M4 screws.

Alarm display lamp

Red light comes on when the preset level is exceeded.

Right side of the body

Rotary switch

Sets the alarm output level.



Rear of the body

Alarm output terminal

When an alarm output is issued, the open collector output appears. Can be used as an external warning buzzer or a display lamp.

Cable fixing slot

The cable used to connect to the alarm output terminal can be fixed in place with a tie band.



Mounting hole ②

Mountable using the hook mounting method.

Mounting hole ③

Mountable from the back using M4 tapping screws. In addition, a DIN rail mounting plate available on the market can be mounted in these mounting holes for attaching a DIN rail.

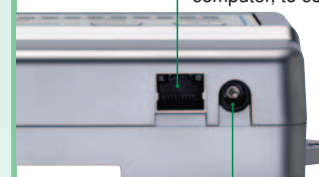
※For details, see the Owner's Manual provided with the product.



Bottom of the body

LAN terminal

LAN cable can be used to connect to a network hub or a personal computer, to collect data.



Power supply jack

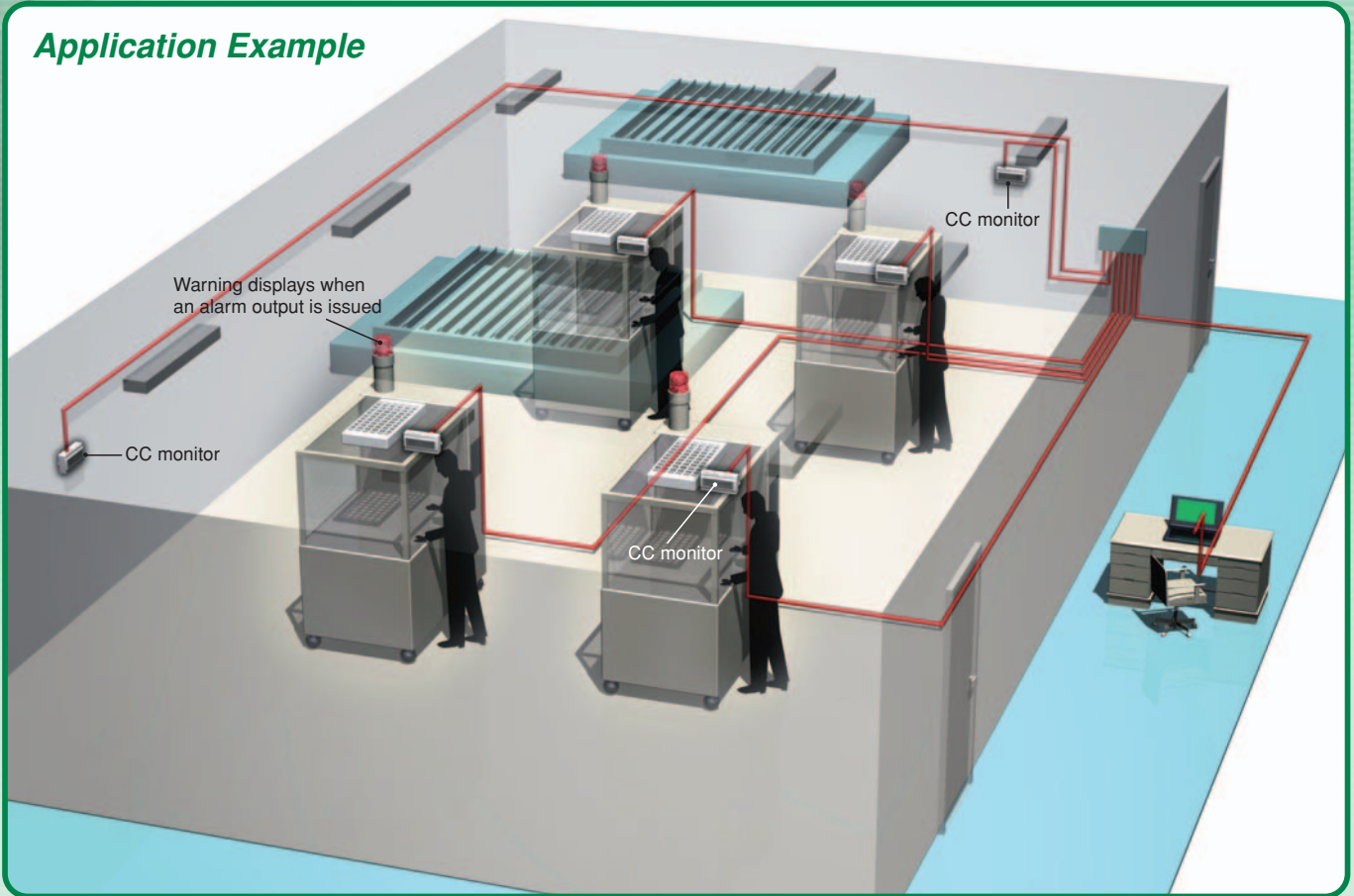
Connects to a dedicated AC adaptor.



Caution

Before use, always read the Safety Precautions in the Owner's Manual.

Application Example



Order Codes

● CC monitor

DTY-CMH-01



Ferrite core (accessory)

※ Used when wiring an alarm output.

Dedicated AC adaptor (accessory)

Rating

Input: 100VAC thru 240VAC

50/60Hz 0.6A

Output: 12VDC 1.5A

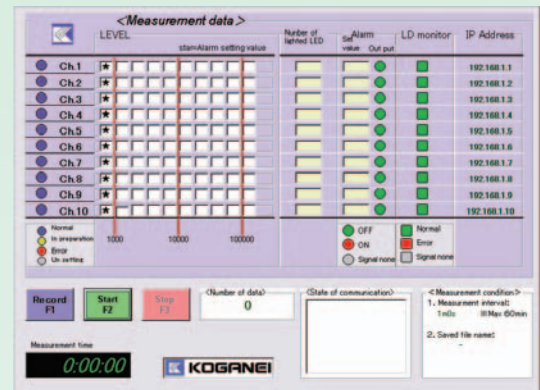
● Option

Dedicated AC adaptor

DTY-CMA-PS01

An AC adaptor provided with the CC monitor
(For maintenance)

● Support software (free)



Download the software from the Koganei website.

Major features

- Up to 10 CC monitors can be centrally controlled.
- Equipped LD monitor function showing the service life of detector laser.

(Compatible OS: Windows NT, 2000, and XP)

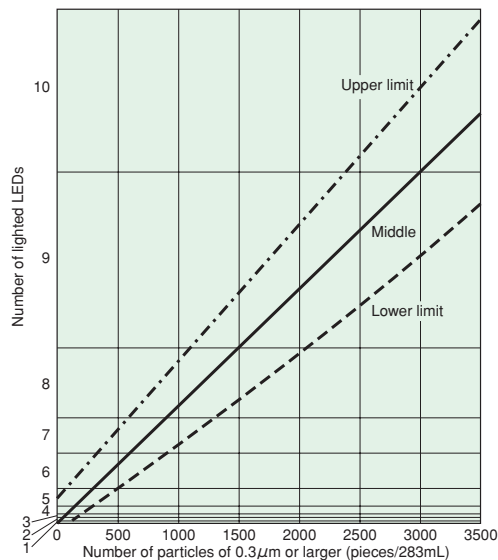
※ Windows is the registered trademark of Microsoft Corporation.

Specifications

Item	Model	DTY-CMH-01
Measurement range		Equivalent of ISO class 5 to ISO class 8
Measurement method		Light scattering method
Detectable particle size		0.3 μ m or larger
Display method		LED display of cleanliness levels set by Koganei
Display level ^{Note}		10-stage level display from LEVEL 100 to LEVEL 100,000 100, 1,000, 2,000, 3,000, 5,000 10,000, 20,000, 30,000, 50,000, 100,000
Sampling method		Uses rising airflow from a built-in heater
Sampling time		5 minutes
Measurement result update time		5 seconds
Alarm output		LED indicator
		Buzzer
		Open collector (24VDC 50mA.max.)
Communication function		Ethernet \times 1 port
Mounting direction		Vertical (Within $\pm 3^\circ$)
Power supply		12VDC $\pm 10\%$ 10W (Always use the dedicated AC adaptor.)
Operating temperature range		0 \sim 40 $^\circ$ [32 \sim 104 $^\circ$ F]
Operating humidity range		30 \sim 80%RH
Mass		Approx. 400g [14.11oz.]
Accessories		AC adaptor, ferrite core

Note: For details about the display level, see "Output Characteristics" and "Guide for Number of Lighted LEDs and Cleanliness Level."

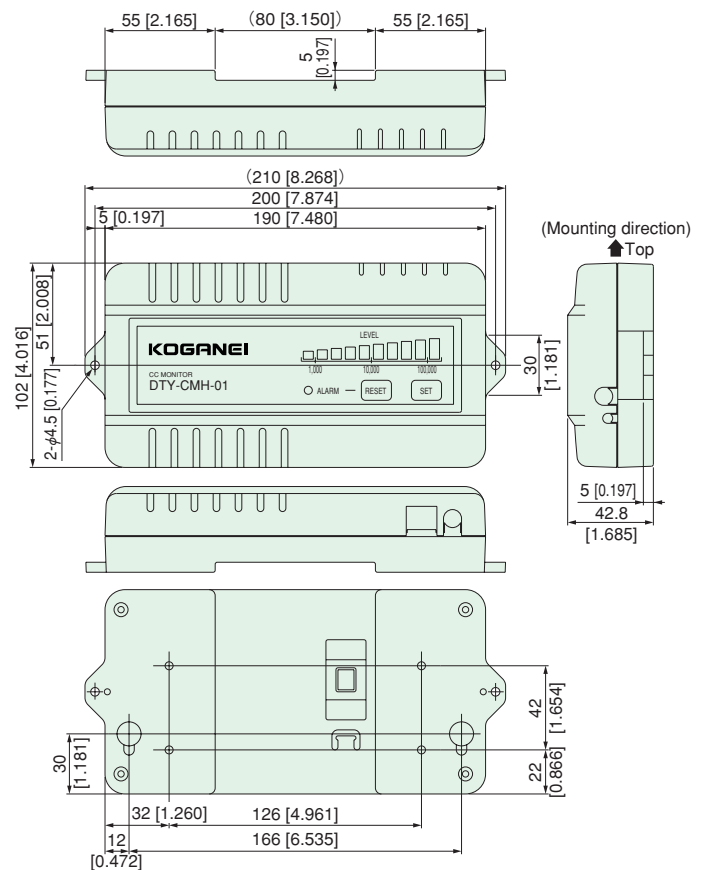
Output Characteristics



Handling Instructions and Precautions

- The cleanliness levels were independently determined by Koganei, with reference to FED STD209D.
- This product is an environmental monitor providing a simplified display in stages of cleanliness level equivalent values, and is not a measuring instrument. For checking the ISO and JIS cleanliness class and for measurement of cleanliness to the required high accuracy, use a separate particle counter or other measuring instrument.
- Since this product is not a measuring instrument, it does not require calibration. However, Koganei will perform inspections and adjustments at customer request. Customers who want the service should consult with Koganei.
- Always mount this product vertically, with the top and bottom orientations maintained. If mounted in any other direction, it cannot detect floating particles. As non-standard mountings could also result in breakdowns, always mount in the specified direction.
- Avoid placement, use, or storage in any of the following locations or environments.
 - Locations where the ambient temperature exceeds the range of 0 to +40 $^\circ$ C [32 to 104 $^\circ$ F].
 - Locations subject to direct sunlight.
 - Locations subject to water, oil, chemicals, or steam.
 - Locations with sudden temperature changes that lead to condensation.
 - Locations with inductive interference, or where static electricity, magnetism, or noise commonly occur.
 - Locations directly in the path of air blowing from air conditioners.
- Before use, always read the Safety Precautions in the Owner's Manual provided with the product.
 - Locations where vibrations or shocks can be transmitted directly to the body.
 - Locations where the ambient humidity is 90% or higher.
 - Locations where radiant heat, etc., results in heat accumulation.
 - Locations with large quantities of dust, salts, or metal powder, etc.
 - Locations subject to corrosive gases or flammable gases.

Dimensions mm [in.]



Guide for Number of Lighted LEDs and Cleanliness Level

Number of lighted LEDs (red)	Cleanliness level	ISO class equivalent value (reference)
0	100	5
1	1,000	6
2	2,000	
3	3,000	
4	5,000	
5	10,000	7
6	20,000	
7	30,000	
8	50,000	
9	100,000	8
10	Over 100,000	Over 8



KOGANEI CORPORATION

OVERSEAS DEPARTMENT

3-11-28, Midori-cho, Koganei City, Tokyo 184-8533, Japan
Tel: 042-383-7271 Fax: 042-383-7276

MICHIGAN REPRESENTATIVE OFFICE

5070 East N Ave., Kalamazoo, Michigan, 49048, U.S.A.
Tel: 269-388-8769 Fax: 269-388-8771

SHANGHAI KOGANEI INTERNATIONAL TRADING CORPORATION

Room 2606-2607, Tongda Venture Building No.1, Lane 600, Tianshan Road, Shanghai, 200051, China
Tel: 021-6145-7313 Fax: 021-6145-7323

KOGANEI-PORNCHAI CO., LTD.

89/174 Moo 3, Vibhavadee Rangsit Road, Talad Bangkhen, Laksi, Bangkok, 10210, Thailand
Tel: 02-551-4025 Fax: 02-551-4015

URL <http://www.koganei.co.jp>

E-mail: overseas@koganei.co.jp