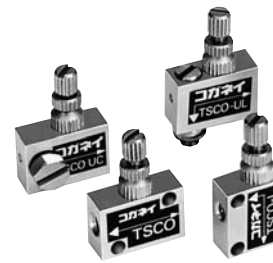


SPEED CONTROLLERS TSCO SERIES

M3×0.5

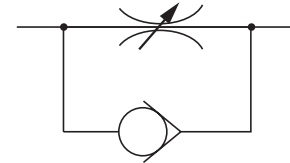


- Offer fine speed control for the M3 ported Pen Cylinders.
- Compact, lightweight, and easy to handle.

Specifications

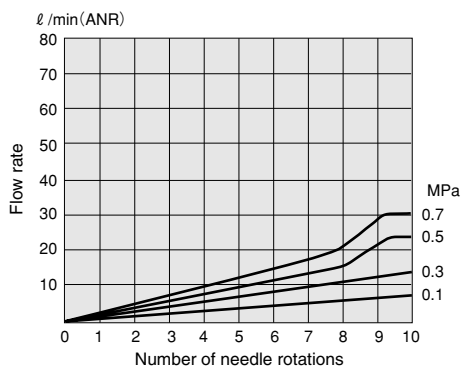
Item	Model	TSCO	TSCO-L	TSCO-UC	TSCO-UL
Piping type	Controlled flow P	Female thread		Universal male thread	
	Controlled flow A	Female thread			
Port size		M3×0.5			
Media		Air			
Operating pressure range	MPa [psi.]	0~0.7 [0~102]			
Proof pressure	MPa [psi.]	1.03 [149]			
Cracking pressure	MPa [psi.]	0.05 [7.3]			
Operating temperature range	°C [°F]	5~60 [41~140]			
Mass	g [oz.]	5 [0.18]	4 [0.14]	6 [0.21]	6 [0.21]

Symbol

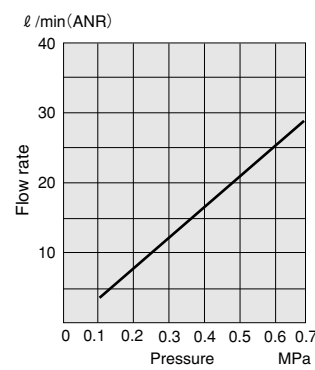


Flow Rate Characteristics

● Controlled flow

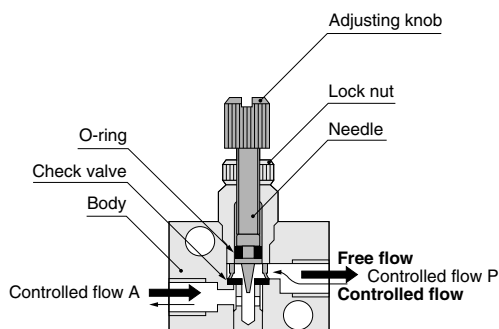


● Free flow



1MPa = 145psi. 1 l/min = 0.0353ft³/min.

Inner Construction and Major Parts



Major Parts and Materials

Parts	Materials
Body	Brass (nickel plated)
Needle	Stainless steel
Lock nut	Brass (nickel plated)
Check valve	Synthetic rubber (NBR)
O-ring	
Adjusting knob	Brass (nickel plated)

Order Codes



Model

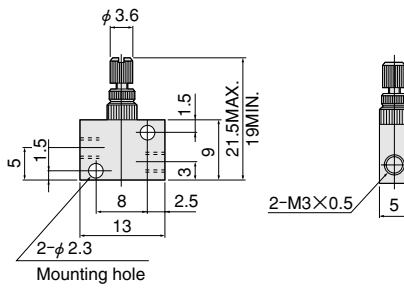
TSCO
TSCO-L
TSCO-UC
TSCO-UL

Non-ion specification

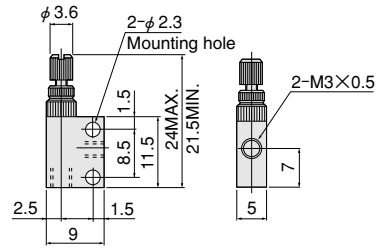
Blank — Standard specification
NCU — Non-ion specification

Dimensions (mm)

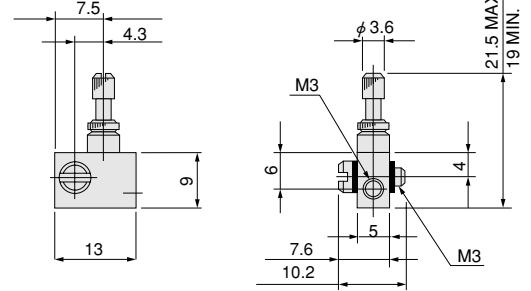
TSCO



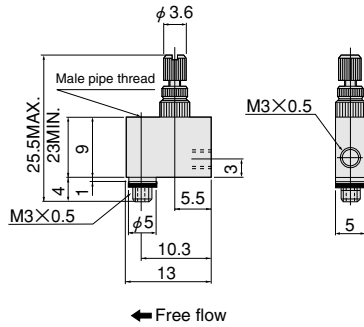
TSCO-L



TSCO-UC



TSCO-UL



Handling Instructions and Precautions

- Always use fingertips to rotate and tighten the lock nut and needle.
Use of excessive tightening force with tools, etc., could cause damage to the units.
- When using a universal male thread type for piping, secure at the male pipe thread portion. The tightening torque should not exceed $0.5\text{N} \cdot \text{m}$ [$4.4\text{in} \cdot \text{lbf}$].